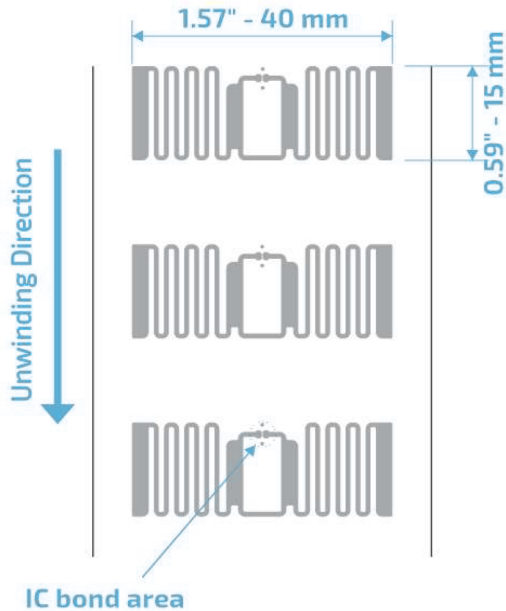


A61F 40x15

UHF RFID 860 to 960 MHz

Product Design



Description

This is a compact, versatile and high-performance inlay, Designed for asset, and inventory management and diverse applications.

Market Applications

- Apparel
- Asset management
- Supply Chain & Logistics
- General purpose

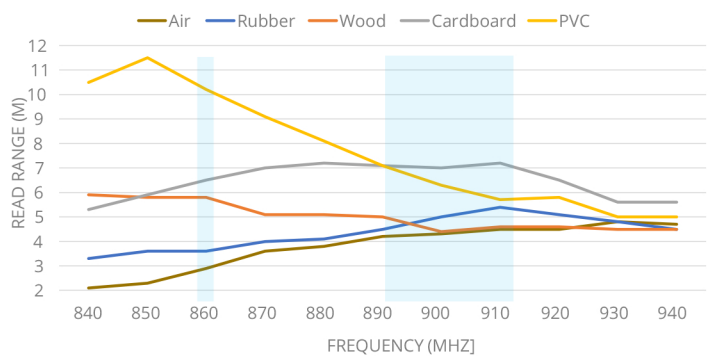
Key Benefits

- Fast reading
- Traceability
- Serializing Items
- Agile counting and tracking

TECHNICAL SPECIFICATION			
Size	Antenna 40x15 mm		
Web	48 mm / 1.890"		
Pitch	26.307 mm / 1.036"		
Gap	11.307 mm / 0.445"		
SKU	IN00128	Inlay A61F R6	
	IN00129	Inlay A61F R6P	
	IN00108	Inlay A61F R6B	
Standards	RAIN RFID ISO 18000-63 and EPC Global Gen2v2		
Integrated Circuit	R6	TID: 96 bits	EPC: 96 bits, User: none
	R6-P	48 uniques	EPC: 96/128 bits, User: 64/32 bits
	R6-B		EPC: 96 bits, User: None
Formats	Dry Inlay, Wet Inlay, Sticker Labels, and RFID tags could be developed according to the necessity		
Substrat	PET with aluminum antenna		
Roll	Qty	Max. Diameter	Core Size
Dry Inlay	22,000	< 398,8 mm / < 15,7"	76.2 mm / 3"
Thickness*	62 - 67 microns		
Temperature	-40 °C to 85°C for operation		
	-40 °C to 85/125 °C for storage		

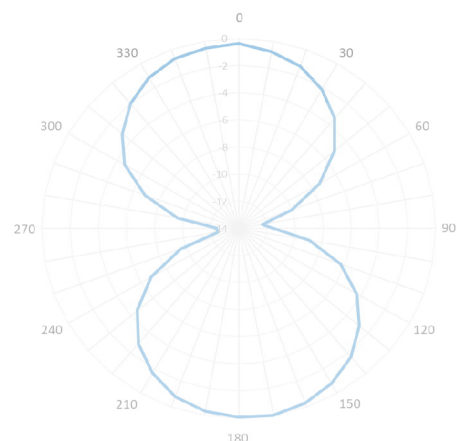
* The thickness excludes the spacer tape

Read range



All graphs are generated in laboratory. Real-life performance may vary. Reader power: 29 dBm. Antenna sensitivity: -70 dBm.

Angular Sensitivity



Structure

