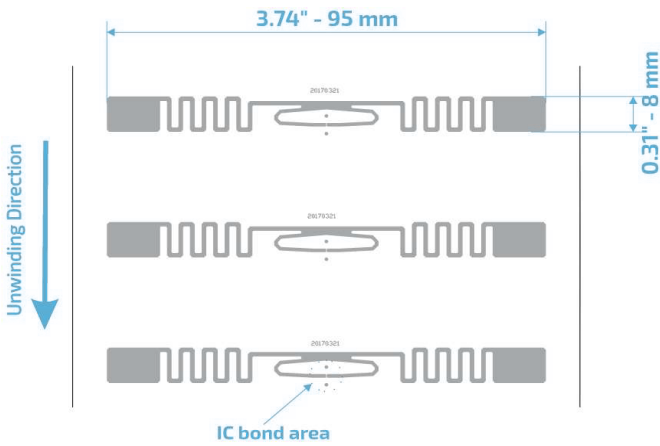


# E61 95x8

UHF RFID 860 to 960 MHz

## Product Design



## Description

This is a special inlay designed for supply chain management of boxes and pallets, and the warehouse receiving checking and dispatch.

## Market Applications

Logistics & Supply Chain  
Boxes and pallets  
Asset management

## Key Benefits

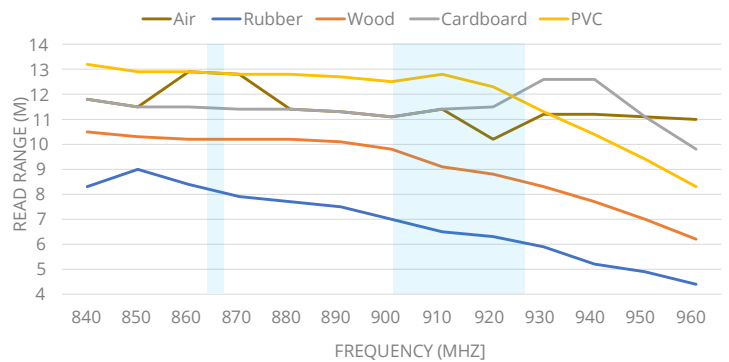
Asset Management  
Inventory accuracy

Quick reading  
Serialization of items

TECHNICAL SPECIFICATION	
<b>Size</b>	Antenna 95x8 mm
<b>Web</b>	110 mm / 4.33"
<b>Pitch</b>	28.331 mm / 1.115"
<b>Gap</b>	20.331 mm / 0.800"
<b>SKU</b>	IN00050 INLAY E61 R6 IN00051 INLAY E61 R6P IN00110 INLAY E61 R6B
<b>Standards</b>	RAIN RFID   ISO 18000-63 and EPC Global Gen2v2
<b>Integrated Circuit</b>	R6 TID 96 bits EPC: 96 bits, User: none R6-P 48 uniques EPC: 96/128 bits, User: 64/32 bits R6-B EPC: 96 bits, User: None
<b>Formats</b>	Dry Inlay, Wet Inlay, Sticker Labels, and RFID tags could be developed according to the necessity
<b>Substrate</b>	PET with aluminum antenna
<b>Roll</b>	Qty Max. Diameter Core Size
<b>Dry Inlay</b>	20,000 < 398,8 mm / < 15,7" 76.2 mm / 3"
<b>Thickness*</b>	62 - 67 microns
<b>Temperature</b>	-40 °C to 85°C for operation -40 °C to 85/125 °C for storage

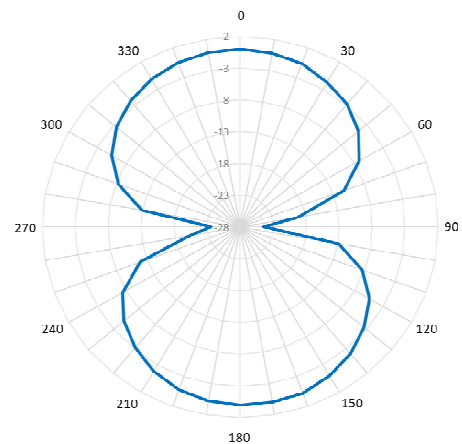
\* The thickness excludes the spacer tape.

## Read range



All graphs are generated in laboratory. Real-life performance may vary.  
Reader power: 29 dBm. Antenna sensitivity: -70 dBm.

## Angular Sensitivity



## Structure

