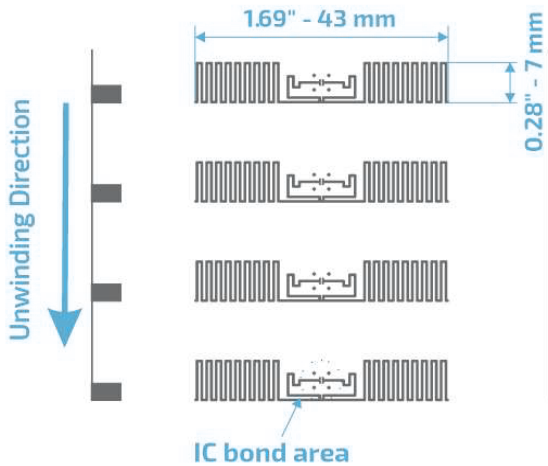


MMC10 43x7

UHF RFID 860 to 960 MHz

Product Design



Description

This is a compact, and versatile inlay. Designed for asset and inventory management, and diverse applications.

Market Applications

- Apparel
- Logistics & Supply Chain
- Asset management

Key Benefits

- Inventory accuracy
- Quickness of handling
- Stock visibility
- Serializing items

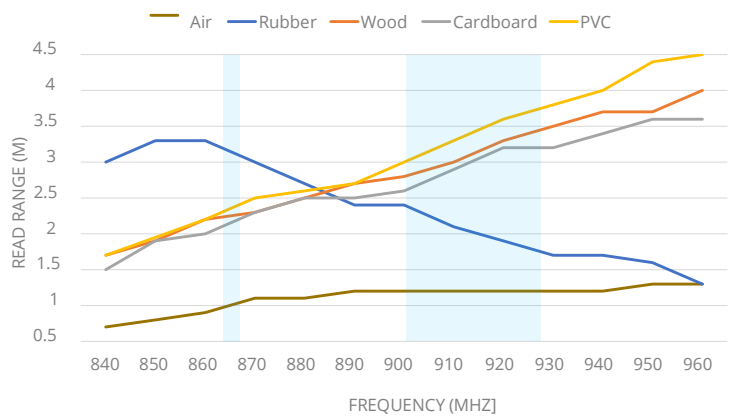
TECHNICAL SPECIFICATION			
Size	Antenna	Register Mark	
	43x7 mm	5x3mm	
Web	78 mm / 3.07"		
Pitch	17.286 mm / 0.681"		
Gap	10.286 mm / 0.405"		
SKU	IN00035	INLAY MMC10 R6	
	IN00142	INLAY MMC10 R6-P	
	IN00143	INLAY MMC10 R6-B	
Standards	RAIN RFID ISO 18000-63 and EPC Global Gen2v2		
Integrated	R6	TID 96 bits	EPC: 96 bits, User: none
	R6-P	48 uniques	EPC: 96/128 bits, User: 64/32 bits
	R6-B		EPC: 96 bits, User: None
Formats	Dry Inlay, Wet Inlay, Sticker Labels, and RFID tags could be developed according to the necessity		
Substrat	PET with aluminum antenna		
Roll	Qty	Max. Diameter	Core Size
	Dry Inlay	22.000	< 398,8 mm / < 15,7"
Thickness*	62 - 67 microns		
Temperature	-40 °C to 85°C for operation		
	-40 °C to 85/125 °C for storage		

* The thickness excludes the spacer tape.

Structure



Read range



All graphs are generated in laboratory. Real-life performance may vary. Reader power: 29 dBm. Antenna sensitivity: -70 dBm.

Angular Sensitivity

