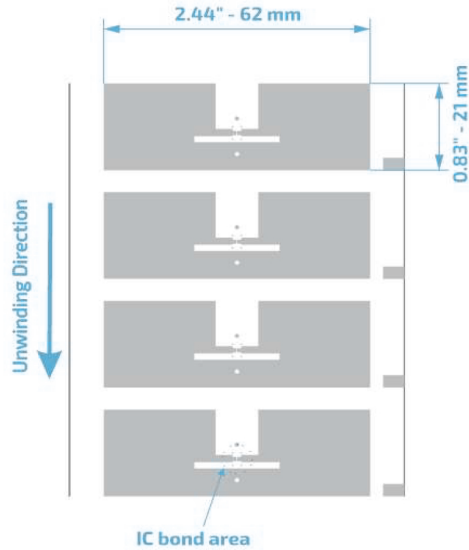


P33 - ZEGG 62X21

UHF RFID 860 to 960 MHz

Product Design



Description

This is an inlay designed for high-performance applications on glass and rubber surfaces, such as vehicle access control.

Market Applications

- Vehicle access control
- Automotive tracking
- Asset and inventory management

Key Benefits

- Authenticity
- Traceability
- Fast reading
- Serializing Items

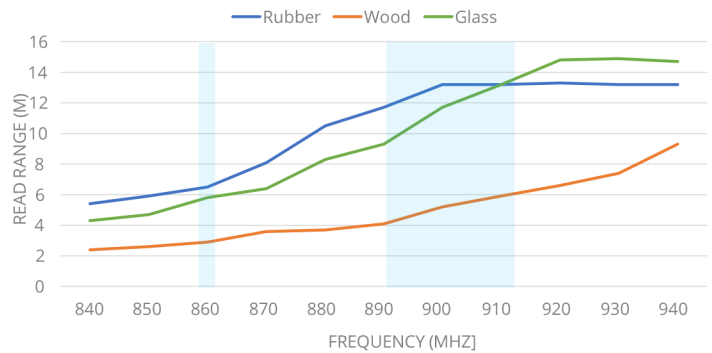
TECHNICAL SPECIFICATION	
Size	Antenna 60x21 mm
Web	78 mm / 3.071"
Pitch	26.307 mm / 1.036"
Gap	5.307 mm / 0.209"
SKU	IN00018 Inlay ZEGG R6 IN00137 Inlay ZEGG R6-P IN00120 Inlay ZEGG R6-B
Standards	RAIN RFID ISO 18000-63 and EPC Global Gen2v2
Integrated Circuit	R6 TID 96 bits EPC: 96 bits, User: none R6-P 48 uniques EPC: 96/128 bits, User: 64/32 bits R6-B EPC: 96 bits, User: None
Formats	Dry Inlay, Wet Inlay, Sticker Labels, and RFID tags could be developed according to the necessity
Substrat	PET with aluminum antenna
Roll	Qty Max. Diameter Core Size
Dry Inlay	20.000 < 398,8 mm / < 15,7" 76.2 mm / 3"
Thickness*	62 - 67 microns
Temperature	-40 °C to 85°C for operation -40 °C to 85/125 °C for storage

* The thickness excludes the spacer tape.

Structure



Read range



All graphs are generated in laboratory. Real-life performance may vary. Reader power: 29 dBm. Antenna sensitivity: -70 dBm.

Angular Sensitivity

