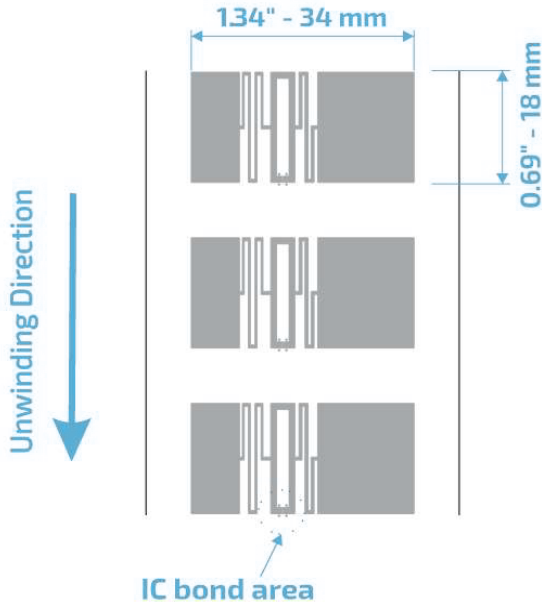


P54 - ISLA 34x18

UHF RFID 860 to 960 MHz

Product Design



Description

This inlay was designed to be applied on metal surfaces, and the metal object amplifies the range of reading. It is also suitable for other surfaces as: wood, rubber, PVC, and cardboard for data collection.

Market Applications

- Logistics & Supply chain
- Asset management
- Inventory accuracy

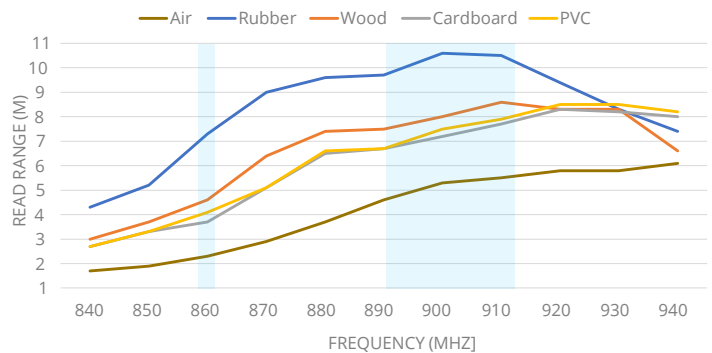
Key Benefits

- Fast reading
- Quickness of counting and tracking
- Traceability

TECHNICAL SPECIFICATION			
Size	Antenna 34x18 mm		
Web	48 mm / 1.89"		
Pitch	26.307mm / 1.036"		
Gap	8.307 mm / 0.327"		
SKU	IN00060	Inlay ISLA R6	
	IN00061	Inlay ISLA R6-P	
	IN00118	Inlay ISLA R6-B	
Standards	RAIN RFID ISO 18000-63 and EPC Global Gen2v2		
Integrated Circuit	R6	TID 96 bits	EPC: 96 bits, User: none
	R6-P	48 uniques	EPC: 96/128 bits, User: 64/32 bits
	R6-B		EPC: 96 bits, User: None
Formats	Dry Inlay, Wet Inlay, Sticker Labels, and RFID tags could be developed according to the necessity		
Substrate	PET with aluminum antenna		
Roll	Qty	Max. Diameter	Core Size
	Dry Inlay	22,000	< 398,8 mm / < 15,7"
Thickness*	62 - 67 microns		
Temperature	-40 °C to 85°C for operation		
	-40 °C to 85/125 °C for storage		

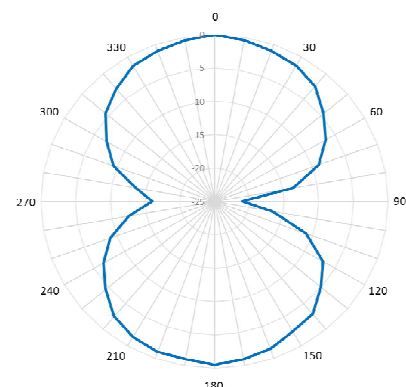
* The thickness excludes the spacer tape.

Read range



All graphs are generated in laboratory. Real-life performance may vary. Reader power: 29 dBm. Antenna sensitivity: -70 dBm.

Angular Sensitivity



Structure

