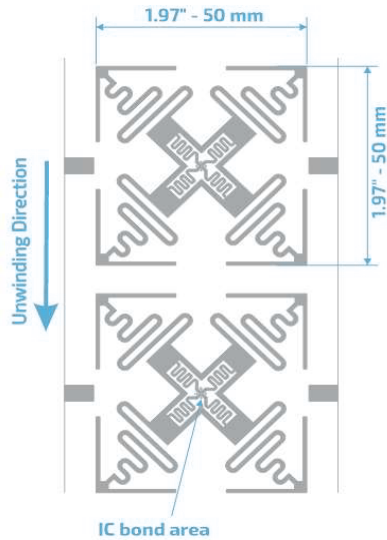


# P66 - FIFTY 50x50

UHF RFID 860 to 960 MHz

## Product Design



## Description

Designed with 360° reading technology, which offers readability in an adverse label positioning. Specially Designed for supply chain management of boxes and pallets.

## Market Applications

- Boxes and pallets
- Asset management
- Supply chain, inventory and logistics

## Key Benefits

- Traceability
- Inventory management
- Goods in transit

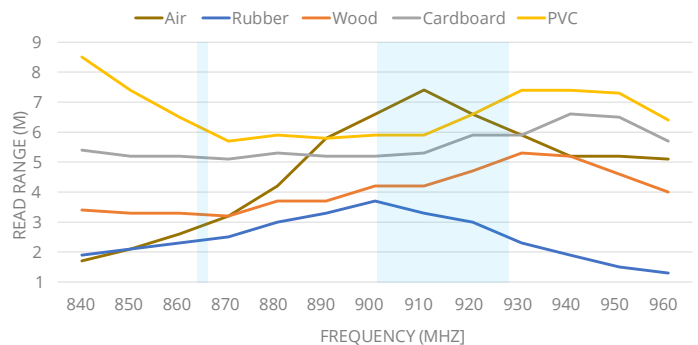
TECHNICAL SPECIFICATION			
<b>Size</b>	Antenna	Register mark	
	50x50 mm	5x3 mm	
<b>Web</b>	65 mm / 2.56"		
<b>Pitch</b>	57.15 mm / 2.25"		
<b>Gap</b>	7.15 mm / 0.281"		
<b>SKU</b>	IN00081	Inlay FIFTY 4QT	
	IN00134	Inlay FIFTY 4E	
<b>Standards</b>	RAIN RFID   ISO 18000-63 and EPC Global Gen2v2		
<b>Integrated Circuit</b>	Monza 4QT	TID 96 bits	EPC: 128 bits, User: 512 bits
		48 uniques	
<b>Formats</b>	Dry Inlay, Wet Inlay, Sticker Labels, and RFID tags could be developed according to the necessity		
<b>Substrate</b>	PET with aluminum antenna		
<b>Roll</b>	Qty	Max. Diameter	Core Size
	Dry Inlay	20,000	< 398,8 mm / < 15,7"
<b>Thickness*</b>	62 - 67 microns		
<b>Temperature</b>	-40 °C to 85°C for operation		
	-40 °C to 85/125 °C for storage		

\* The thickness excludes the spacer tape.

## Structure



## Read range



All graphs are generated in laboratory. Real-life performance may vary. Reader power: 29 dBm. Antenna sensitivity: -70 dBm.

## Angular Sensitivity

